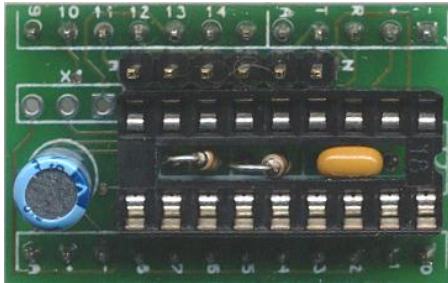


Athena/Nemesis Carrier 1u Assembly and Hookup Sheet

Version 1.0

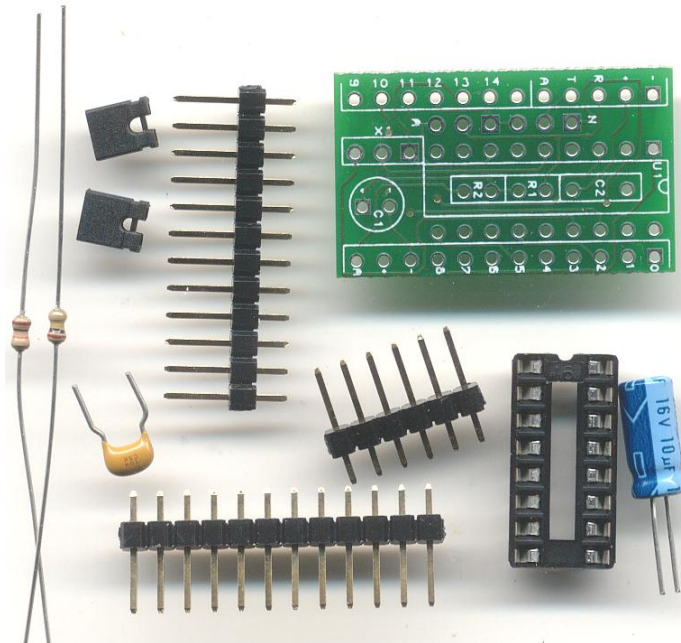


The Athena/Nemesis Carrier #1u
includes the following

- Assembly and Hookup Sheet
- Printed Circuit Board
- 18 Pin Socket
- 2, 12 Pin Male Header2
- 6 Pin Male Header
- 100k Resistor
- 10k Resistor
- 10k Resistor
- 10uf Capacitor
- .1uf Capacitor
- 2, Jumpers

This carrier is compatible with the following
microcontrollers.

Athena
AthenaHS (Requires 20Mhz Resonator)
Athena485
Nemesis



Kronos Robotics
and Electronics 

www.kronosrobotics.com

1: Assembly

Step 1

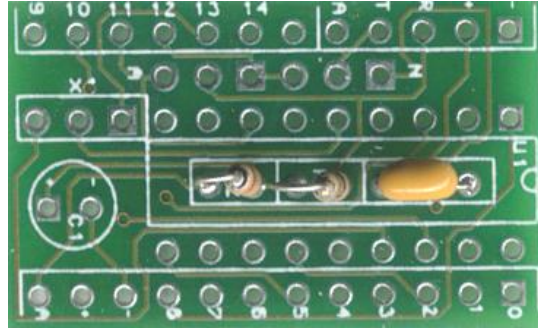
Insert the 10K resistor into the position marked R2. Insert the 100K resistor into the position marked R1. Insert the .1uf capacitor into the position marked C2. You will have to bend one of the leads of each resistor so it can be inserted.

Do not solder at this time

Hint

10K = brown, black, orange

100K = brown, black, yellow



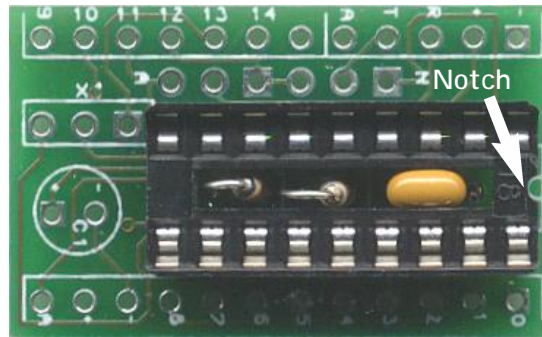
Step 2

Insert the 18 pin socket into the position marked U1 as shown. Make sure the notch is facing the right. You may have to wiggle the socket to get it over the .1uf cap as it is a tight fit.

Watch the leads of the socket and make sure they fit into the holes.

Flip the board over and solder R1, R2 and C2 in place.

Clip the excess leads then solder the 18 pins on the socket.

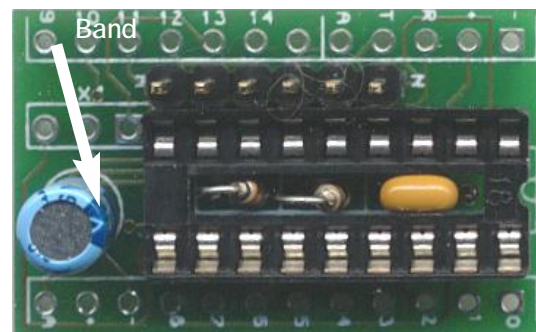


Step 3

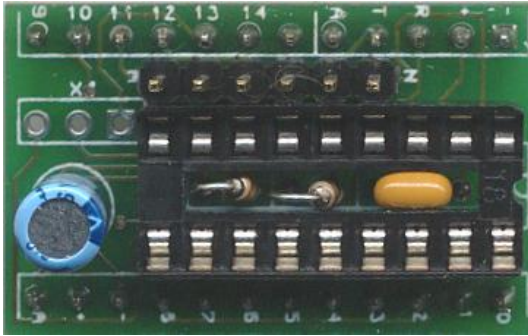
Insert 6 pin header as shown and solder in place.

Step 4

Insert 10uF capacitor into the position marked C1 and solder in place. Make sure the band is facing the left as shown.



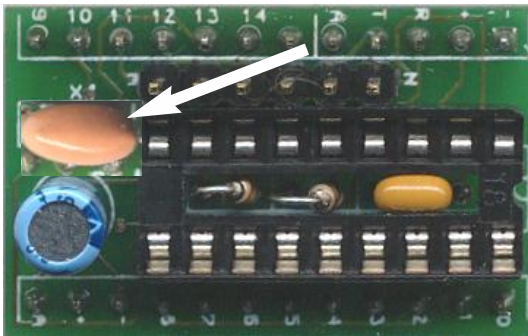
1: Assembly



Step 5

Insert the 2, 12 pin headers as shown. Solder on the top of the board.

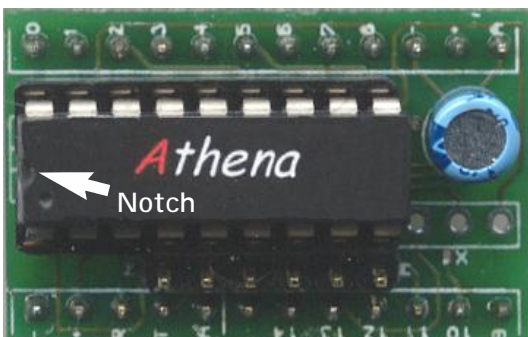
Note: If you are using the carrier board for a project that does not need headers you may skip this step. Note that you can use other headers such as female or right angle as well depending on your application.



AthenaHS Resonator Option

If you purchase the resonator option for the AthenaHS install it into the position marked X1.

Note: The Resonator is required for the AthenaHS.



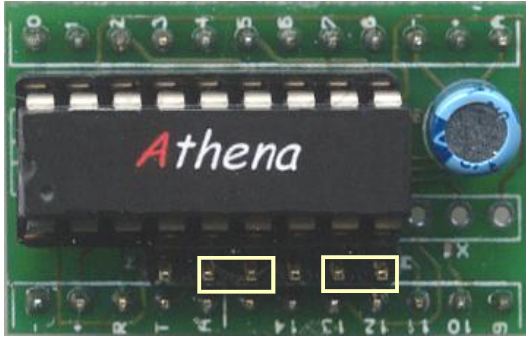
Step 6

Insert your micro controller as shown. Make sure the notch on the microcontroller is facing the edge of the board as shown.

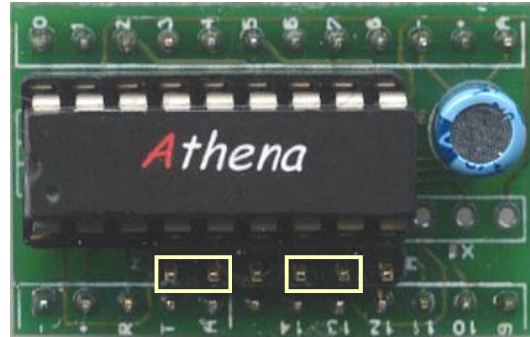
This carrier is compatible with:
Athena
AthenaHS (Requires 20Mhz Resinator)
Athena485
Nemesis

2: Hookup

This board has 2 jumpers that are used to select the type microcontroller you are using.



Athena
AthenaHS
Athena485



Nemesis

