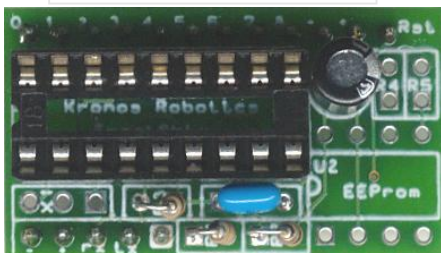


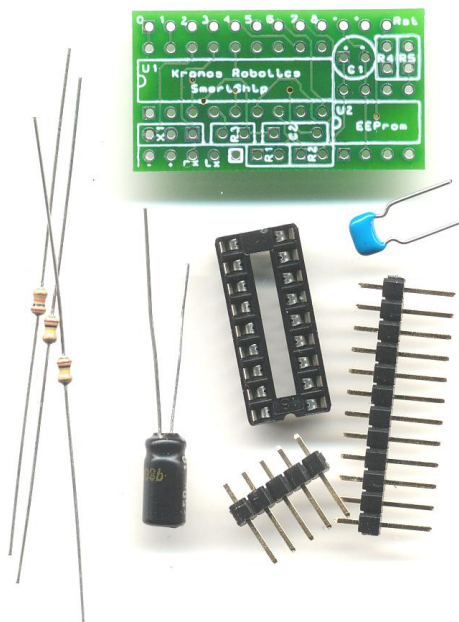
Athena Carrier 1 Assembly and Hookup Sheet

Version 1.2



The Athena Carrier #1
includes the following

- Assembly and Hookup Sheet
- Printed Circuit Board
- 18 Pin Socket
- 12 Pin Male Header
- 5 Pin Male Header
- 2, 100k Resistors
- 10k Resistor
- 10uf Capacitor
- .1uf Capacitor



Kronos Robotics
and Electronics 

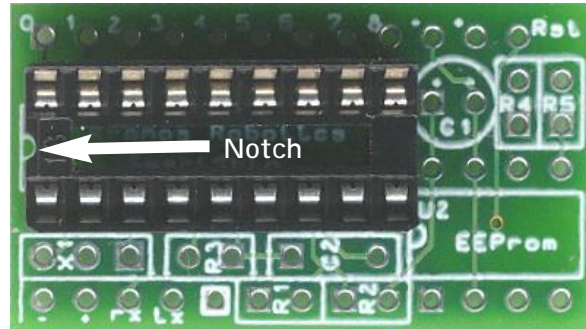
www.kronosrobotics.com

1: Assembly

Step 1

Insert the 18 pin socket as shown. Make sure the notch is facing the direction shown.

Solder in place.

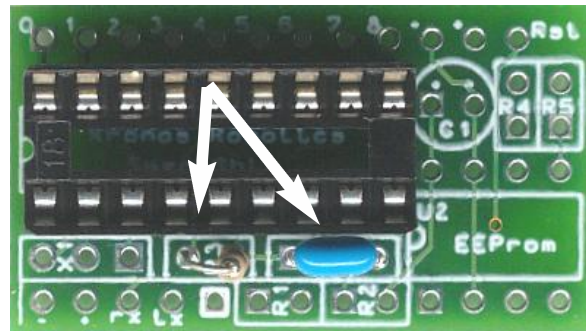


Step 2

Insert the 10K resistor into the position marked R3. Solder in place and clip excess leads.

Hint: 10K = Brown, Black, Orange

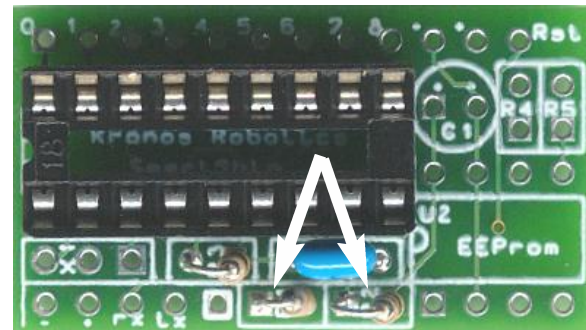
Insert the .1uf capacitor into the position marked C2, Solder in place and clip excess leads.



Step 3

Insert the 100K resistor into the positions marked R1 and R2, Solder in place and clip excess leads.

Hint: 100K = Brown, Black, Yellow

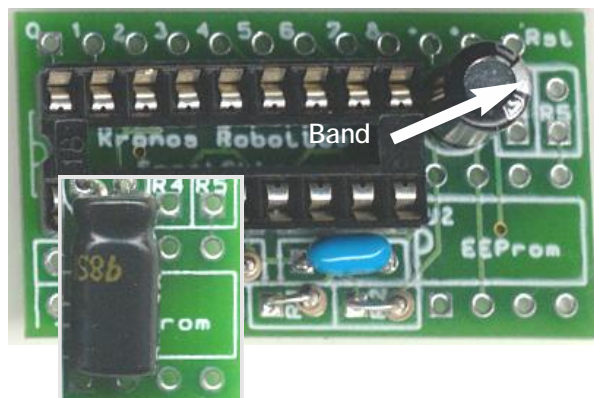


Step 4

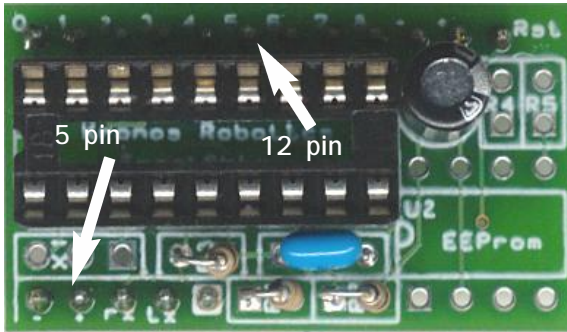
Insert the 10uf capacitor as shown into position C1. Make sure the band (short lead) is facing the right.

Solder in place and clip excess leads.

Note: You may want to install the capacitor in a horizontal position as shown.



1: Assembly

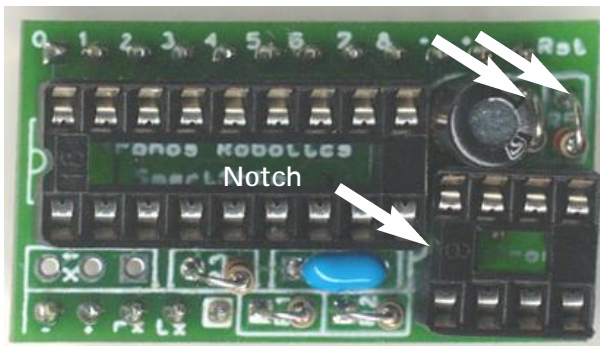


Step 5

Insert the 12 pin and 5 pin headers as shown. Solder on the top of the board.

Note: If you are using the carrier board for a project that does not need headers you may skip this step. Note that you can use other headers such as female or right angle as well depending on your application.

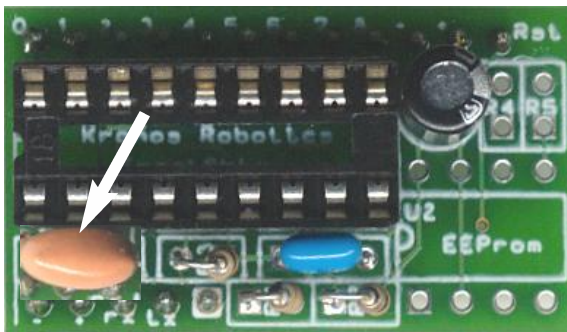
Attention: You may want to install other options before you install the headers.



EEPROM Option

If you purchase the EEPROM Option install the 2, 1K resistors in positions R4 and R5. Install the 8 pin socket into the position marked U2.

Make sure the notch is facing the left as shown.



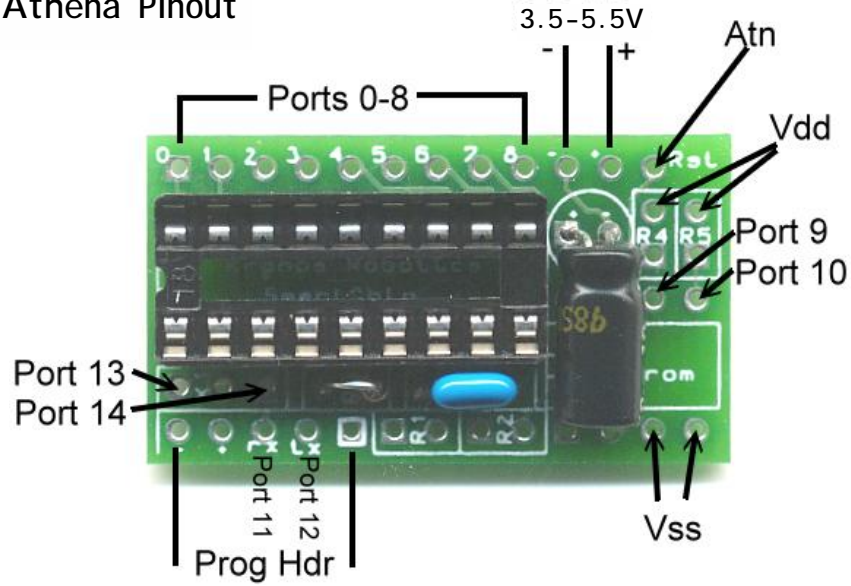
AthenaHS Resonator Option

If you purchase the Resonator option for the AthenaHS install it into the position marked X1.

Note: The Resonator is required for the AthenaHS.

2: Hookup

Athena Pinout



AthenaHS Pinout

